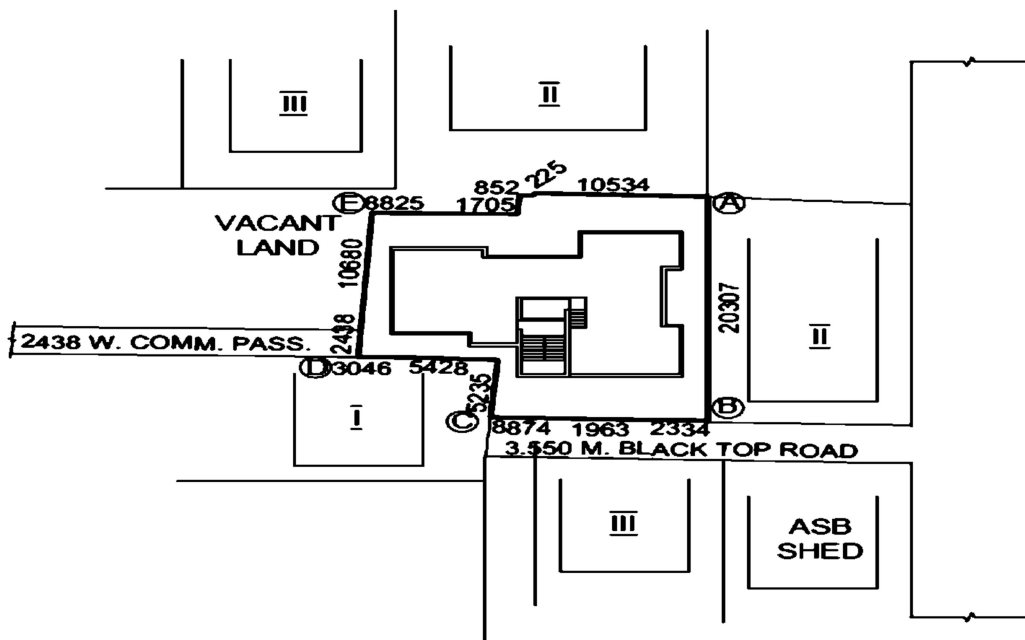
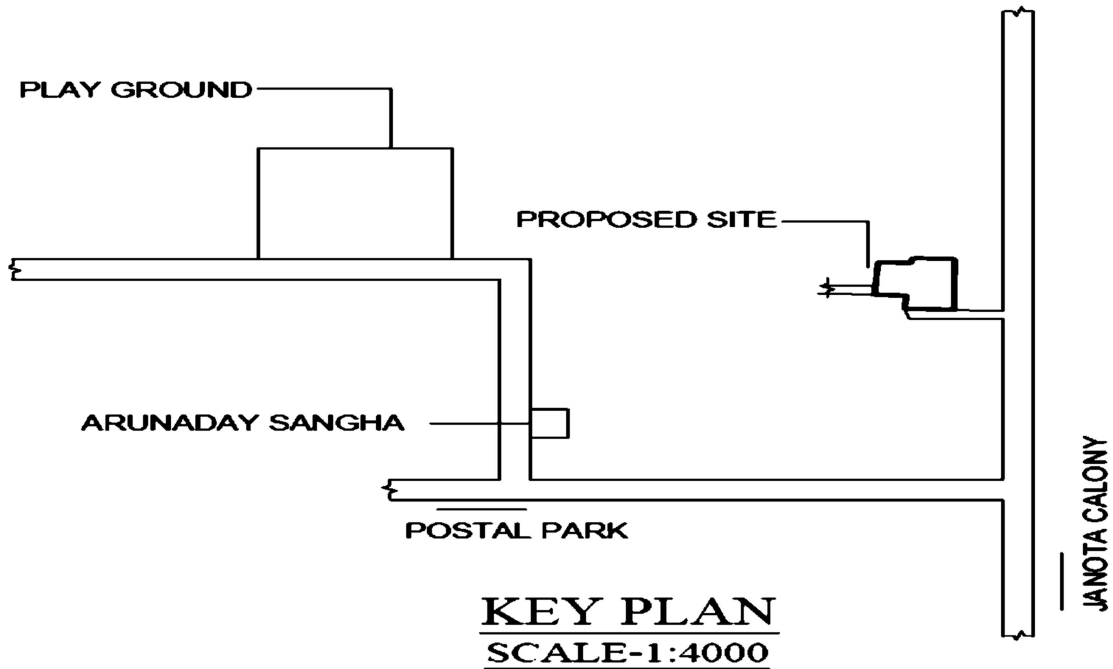


Location Map with Latitude and Longitude for the Project named **BALAJI APARTMENT PHASE- II** at Premises No. - 195, Postal Park, Borough – XI, Ward No - 112, of KMC, PS – Bansdroni, Kolkata – 700070, WB, India:

LATITUDE	LONGITUDE
22°-28'-5"N	88°-21'-33"E



MAA CONSTRUCTION
Tapas Naskar
Proprietor